

MILDEF CRETE

Corporate Newsletter



Introduction

By Kevin Wang



Under the relief of the pandemic, following the footsteps of other countries in the world, people's life in Taiwan has finally gradually returned to normal.

However, with the war between Russia and Ukraine, the subsequent problems such as soaring oil prices and inflation have also slowed down the global economy, and may even decline.

After these years of various challenges in life, I believe that everyone can appreciate the importance of health. In the coming days, regardless of gender, age, or child, we should cultivate proper exercise habits and go outdoors more, experience the beauty of nature, and let the both body and mind can be fully satisfied, and it will definitely be a very worthwhile investment

project. Here, I would like to encourage everyone to move forward towards a healthier life and attitude, and towards a more exciting life!

Introduction

MOLICEL low temperature cell

Equipment addition - SMT smart material rack + ACCU ID material roll bar code recognition system

Construction of new enterprise network system

Information system integration and upgrade

2022 Q1 Supplier Quality Review

Employee Activities

- Fat loss activities
- Diagnosed with COVID-19

Introduction on Molice Battery Cell

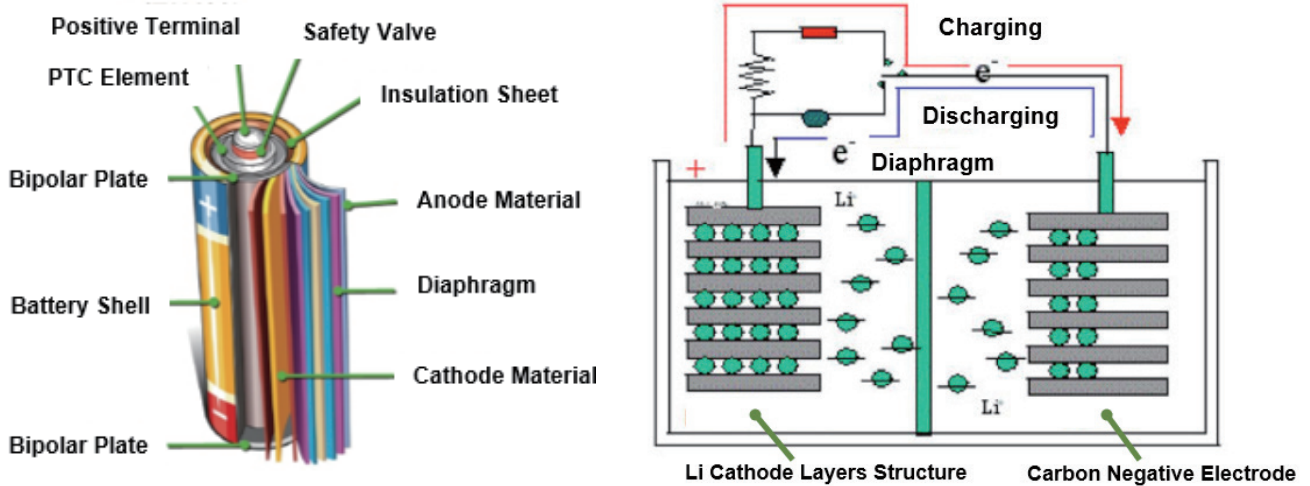
By Jonas Hung

We, the R & D, have been dedicated to developing batteries that are applicable for different operating environments. Thanks to the characteristics of the Molice battery cell, smooth device operations are guaranteed in extreme environments. The following paragraphs provide a detailed introduction on Molice Battery Cell.

Why Choose Molice Battery Cell

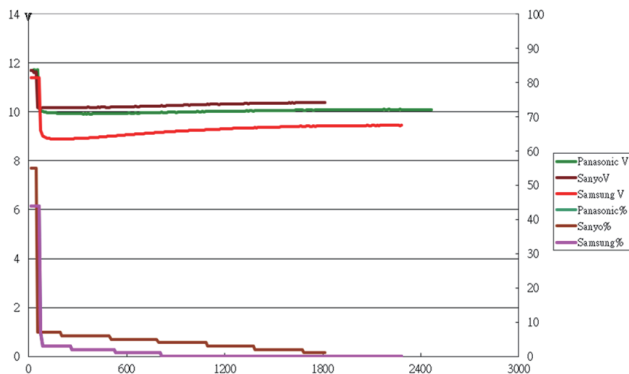
- Longer lifespan with cycles exceed 500.
- Applicable for harsh environments, where rain, snow, low temperature, or blazing sun is expected.
- High reliability and high consistency, which are suitable for connecting batteries multiple in parallel and series.
- High security as design of power type battery, and thicker diaphragms, foils as well as chassis are applied, but this ends up energy density being less by $\frac{1}{2}$ comparing to consumer batteries.

Lithium-Ion Battery Diagram

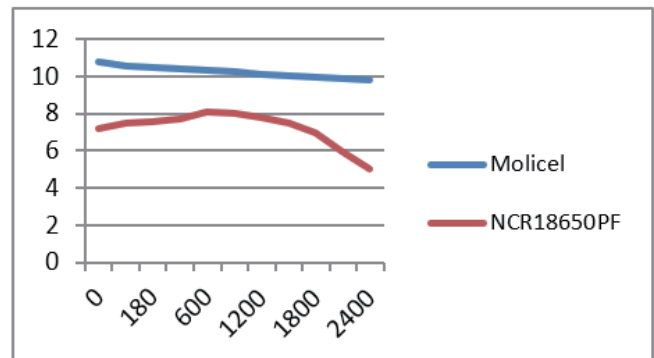


Comparison of Molicel Battery Cell in Low Temperature Environment

The diagram below indicates that battery cells will not start discharging until the battery voltage drops to 12.6V and at least 8.5V is required to power ON the device, while the one on the right shows battery cells stored in -30°C chamber and with 1A loading.



Discharging Battery at -20°C








Battery Voltage at -30°C

Characteristics of Internal Resistance of Lithium-Ion Battery

- Mainly composed of electrode materials, electrolytes, diaphragm resistances, and contact resistances for each part, which are related to battery dimensions, structures, and assembly.
- Made up of active substances, the internal resistance is not constant because the electrolyte concentration and temperature are consistently changing, the internal resistance then changes with time during the process of charging and discharging.
- Follows the Ohm's Law, and polarization resistance increases along with the increase of current density. The logarithm of current density increases linearly, but it is temperature changes that make polarization resistance and current density in a nonlinear relationship.
- Vary according to different types of batteries. For the same type of batteries, the internal resistances may differ for the inconsistency of the internal chemical characteristics. Under normal circumstances, the smaller internal resistance, the greater capability in discharging high current, and vice versa.
- Internal resistance of power type lithium-ion battery (200 mΩ) is smaller than that of capacity type lithium-ion battery. Take 18650 battery for example, the internal resistance of 3C battery is approximately 40 mΩ and that of Molicel battery is around 20mΩ.

Comparison on Cells

Cells		Molicel INR-18650-P26A	NCR18650PF	NCR18650
Rated Capacity		2500mAH	2900mAH	2900mAH
Nominal Voltage		3.6V	3.6V	3.7V
Internal Resistance		<20mohm 	<35mohm	<48mohm
Maximum Charging Current		6A 	1.35A (STD)	1.925A (STD)
Maximum Discharging Current		35A 	10A	3.3A
Operating Temperature	Charging	0°C ~ 60°C 	10°C ~ 45°C	0°C ~ 45°C
	Discharging	-40°C ~ 60°C 	-20°C ~ 60°C	-20°C ~ 60°C

Test Result of Molicel Battery Cell

Test procedures

1. Decrease the chamber temperature to -40°C at a decreasing rate of 1°C per minute.
2. Store the device in the chamber for 2 hours after its temperature drops to -40°C.
3. Attach the battery to the device and operate for 2 hours.
4. Raise the chamber temperature back to 25°C at an increasing rate of 1°C per minute.

Test requirements

1. Run Burn-In test for 30 minutes during the 2-hour operation in low temperature chamber.
2. The result shows PASSED or FAIL according to whether or not the device works properly.
3. Perform a visual inspection to review if the battery surface is wrinkled, cracked, or its paint peeled.

Test results

RK12	Test at -20°C		Test at -30°C		Test at -40°C	
	4 Hours	8 Hours	4 Hours	8 Hours	4 Hours	8 Hours
Molicel INR-18650-P26A	Burn-In Test > 2 Hours		Burn-In Test > 2 Hours		Burn-In Test ≈ 1.5 Hours	
NCR18650PF (Power cell)			Cannot power ON		Cannot power ON	
NCR18650 (Standard cell)	Instant shutdown after entering OS		Cannot power ON			

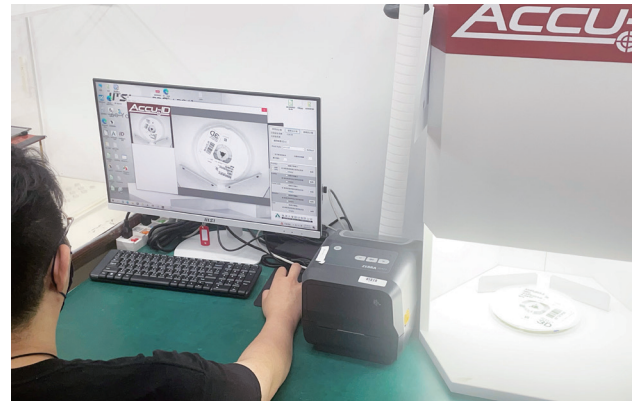
Equipment Addition - SMT Smart Rack + ACCU ID Reel Barcode Recognition System

By Wolf Lin

In order to maintain production quality, in 2021, SMT purchased two high-unit price equipment, SPI and X-ray, so that the Cpk of the production line can be reliably checked and also stabilize the process parameters.

In order to maintain a better process yield and effectively reduce artificial production instability, SMT introduced the ACCU ID reel barcode recognition system and smart racks this year.

The ACCU ID Reel Barcode Recognition System can record the supplier, production date, quantity, production place, batch number, humidity level and other relevant main information of the material in real time when the material enters the factory, and make key components in the production process. Targeted and effective control to prevent production defects. In addition, when the product has production requirements, the intelligent material rack uses the system to control the material type of the finished product and uses LED lights to indicate the materials to be added, which can prevent the production caused by artificial reclaiming. Wrong materials are used, and the PCBA produced can effectively track when, where, what factory, and what batch of components it uses. When relevant suppliers report production defects, they can immediately notify our partners to recall them. Corresponding products to maintain the quality of products shipped to customers.



Operation mode of ACCU ID reel barcode recognition system and smart rack



Intelligent rack reclaiming form (1)



Intelligent rack reclaiming form (2)

Construction of new enterprise network system

By Vincent Jian

Under the leadership of the general manager and vice presidents, our company has successively introduced new software systems such as sMES and OpenPLM, and implemented new tools for the company's modernization transformation and digitalization goals, saving unnecessary waste of human resources and extra staff time expenses, make more use of resources and time, more efficiently complete customer orders, and complete customer entrustments.

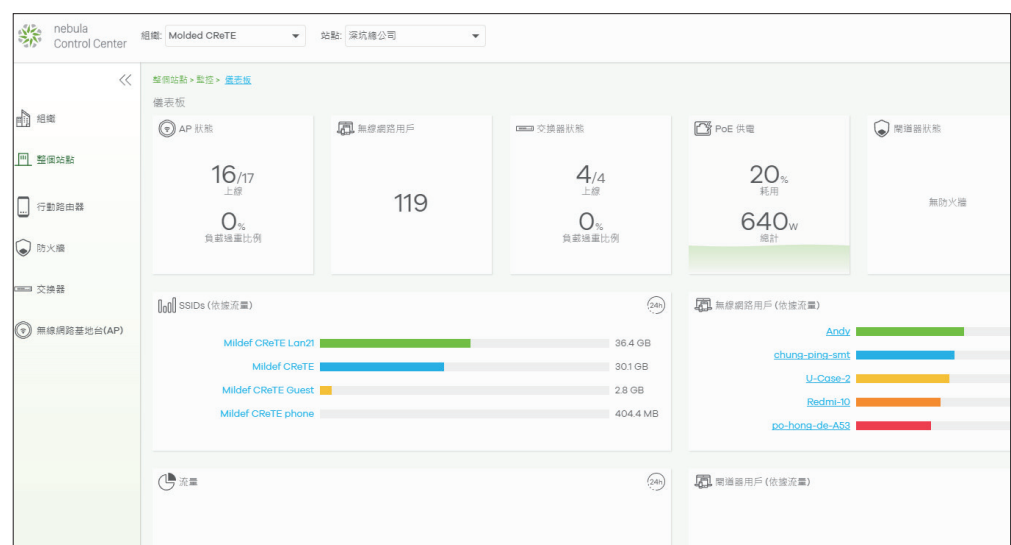
When there is a new system, looking at the planning of future resources: "allocation" has become another topic! The first and foremost is the "network environment" that must cooperate with the system software and hardware to communicate with each other!!! And the introduction of the new system also focuses on mobile services. In the company's future system blueprint, there will be more and more mobile devices. It is completely dependent on the communication link of the wireless network. It is used in the control and adjustment of product manufacturing, the verification of quality assurance, and the storage management of spare parts.

In the application of wired network, in addition to 1G and 10G, the mainstream in the future will be Multi-Gigabit (IEEE 802.3bz). At present, most enterprises still use 1Gbps, and while our company is deploying in stages, we will prioritize this standard into the replacement standard in the future.

The Information Management Office prioritizes the integration of the company's wireless network environment. In the plan, in addition to the wireless network, it will be equipped with POE intelligent network management switches to achieve smooth operation of future mobile devices and resource allocation for the use of the company's internal network.

The new generation of wireless network system adopts the products of Zyxel, a well-known domestic manufacturer, and conforms to the 802.11ax (wifi6) level enterprise wireless network. This product can achieve dynamic channel selection (DCS), fast roaming, and user-end smart adjustment. Stabilize the network quality, and achieve the common problems of

wireless network such as users not stuck, turtle speed or even disconnection. More importantly, the centralized management of the smart cloud system makes the details of the entire network environment clear at a glance.



Unlimited access points scattered throughout the company for maximum signal coverage. Centralized control and management of the system, detailed details and health status of access points, easy for administrators to manage, and can also receive alerts when the network is abnormal at the first time, so as to achieve rapid response and elimination.

無線網路基地台(AP) > 監控 > 無線網路APs(Access Point)

無線網路APs(Access Point) 最近2小時

動作: 新增 刪除 AP 角色 搜尋...

17 無線網路基地台(Access Point)

狀態	名稱	LAN IP	遠端 AP	AP Role Copab...	公共 IP	型號	現存
<input type="checkbox"/>	W17			標準		NWA210AX	0
<input type="checkbox"/>	W5	192.168.15.214		標準	125.227.35.6	NWA210AX	9
<input type="checkbox"/>	W13	192.168.15.138		標準	125.227.35.6	NWA210AX	10
<input type="checkbox"/>	W7	192.168.15.211		標準	125.227.35.6	NWA210AX	3
<input type="checkbox"/>	W10	192.168.15.228		標準	125.227.35.6	NWA210AX	17
<input type="checkbox"/>	W4	192.168.15.47		標準	125.227.35.6	NWA210AX	7
<input type="checkbox"/>	W3	192.168.15.133		標準	125.227.35.6	NWA210AX	4
<input type="checkbox"/>	W12	192.168.15.176		標準	125.227.35.6	NWA210AX	0
<input type="checkbox"/>	W8	192.168.15.196		標準	125.227.35.6	NWA210AX	22
<input type="checkbox"/>	W6	192.168.15.42		標準	125.227.35.6	NWA210AX	8
<input type="checkbox"/>	W9	192.168.15.43		標準	125.227.35.6	NWA210AX	15
<input type="checkbox"/>	W15	192.168.15.170		標準	125.227.35.6	NWA210AX	0
<input type="checkbox"/>	W14	192.168.15.35		標準	125.227.35.6	NWA210AX	1
<input type="checkbox"/>	W16	192.168.15.156		標準	125.227.35.6	NWA210AX	1
<input type="checkbox"/>	W1	192.168.15.165		標準	125.227.35.6	NWA210AX	20
<input type="checkbox"/>	W11	192.168.15.137		標準	125.227.35.6	NWA210AX	0
<input type="checkbox"/>	W2	192.168.15.169		標準	125.227.35.6	NWA210AX	2

狀態

LAN IP: 192.168.15.165 ☒
開道器: 192.168.15.3 | DNS: 8.8.8.8

公共 IP: 125.227.35.6

用量: 15.22 GB 在過去24小時的使用量

現有用戶數: [21](#) 用戶數

網路拓撲圖: [顯示](#)

相關設備資訊: [GS1350-12HP-s2\(GS1350-12HP\)/j/Uplink](#)

連結: 上行鏈路: 1000M/全雙工

LAN 1: 斷線

埠: LAN 1
PVID: 1
允許的 VLANs: 1

廣播風暴控制: 停用 ☒

頻道 (頻帶): 6 (DCS) [2.4GHz] 48*/44/36/40 (DCS) [5GHz]

Channel 利用率: 25% [2.4GHz] 8% [5GHz]

供電模式: 完整 (Power by PoE) ☒

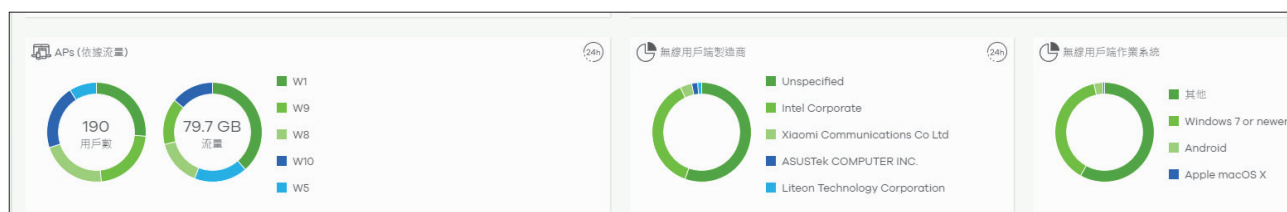
Smart Mesh: 停用 ☒

記錄: [事件日誌](#)

配置狀態: 最新的

軟體狀態: [有可用的升級](#)



當前版本: V6.30(ABTD.4)



Information system integration and upgrade

By Vincent Jian

Faced with the introduction of a new system, the improvement of the network environment, and the importance of information security and data preservation, it is necessary to upgrade the software and hardware to meet the ever-increasing tasks and regulatory requirements. Since the establishment of the FortiGate firewall, the company's E-Mail system has also been upgraded, which integrates filtering mechanisms for viruses, malicious letters, and spam. Statistical information of the overall number of emails is convenient for managers to monitor and organize the data.

Email Flow								
Quantity	Period	All from Oct 26th 2021		Emails this month		Emails this week		Emails today
All Emails 		493,864		48,762		5,146		2,046
Malicious Emails		3,245	0.66%	410	0.84%	53	1.03%	33 1.61%
Sandstorm Emails		103	0.02%	14	0.03%	13	0.25%	13 0.64%
Junk Emails		146,879	29.74%	5,295	10.86%	621	12.07%	205 10.02%
All Delivery Logs 		549,978		54,112		5,575		2,215

Multi-domain function, there is a need to build E-Mail in the branch, which can allow different domains to use, save the budget of repeated investment in software and hardware equipment.

When the company's multiple systems are imported and operated, data backup has become another big problem! Thinking about backing up the existing system in the form of complete machine backup, automatically scheduling the backup system, reducing manual operations and simplifying the backup process. What the administrator needs to do is to manually "verify" the content of the backup data and do data reply verification at a fixed time point. Information Management Office plans system backup case, the backup media adopts Synology's NAS, which is highly reliable and safe. Data preservation is in RAID 6 mode.



In terms of software, Veeam and Acronis, which are highly trusted in the industry, are used as backup tools, and the whole machine is effectively backed up. If there is any situation, the data can be restored in the shortest time.



Simple

Fine recovery, powerful analysis, and expandable structure



Flexible

Software-defined, not limited to hardware, and cloud supported



Reliable

Data in 100% evidence-based format, one-size-fits-all, and "just easy to use"



Powerful

Fine recovery, powerful analysis, and expandable structure

Veeam products apply to different architectures

VMWARE

HYPER-V

AWS

AZURE

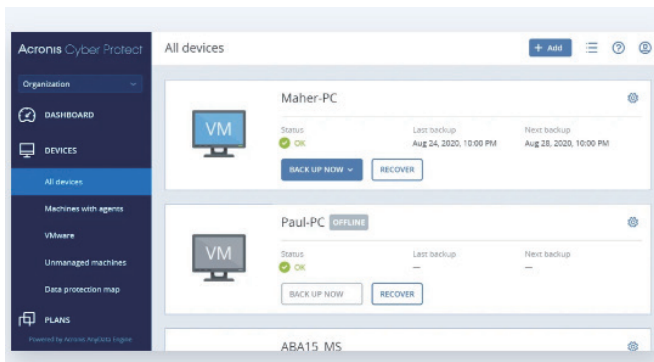
IBM CLOUD

OFFICE 365

WINDOWS

LINUX

所有產品

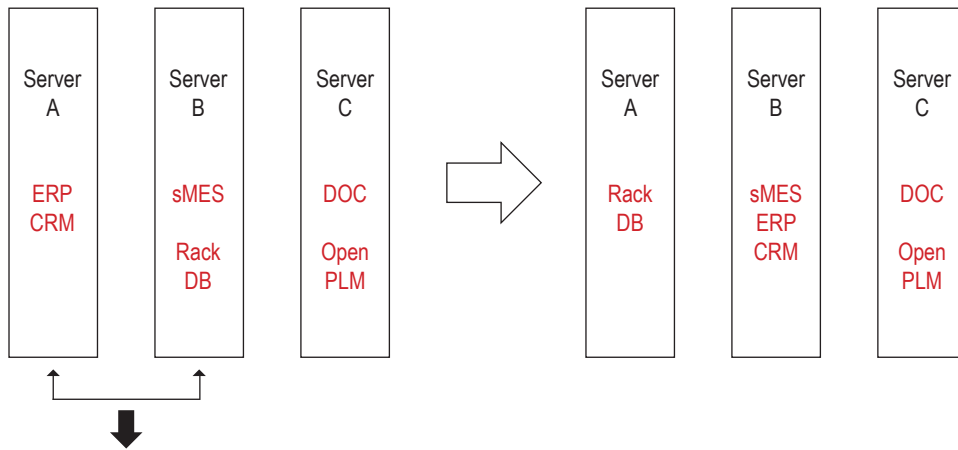


Utilize single integrated solution to reduce the effort in protection.

- Manage all protections via one main console
- Eliminate performance and compatibility issues
- Save time and effort for managing multiple tools

In addition to systematic automatic scheduling of backups, thanks to virtualization. Of course, there is the GuestOS exchange in the server! No need to invest too much hardware budget, you can achieve the maximum utilization of resources. Move the GuestOS with heavy system resources to a server with better hardware performance. In order to achieve resource balance and resource utilization, the value of hardware is fully utilized. This time, adjustments have also been made:

Changing illustration



Exchange ERP for Rack DB

Direct benefits

1. System backup becomes more complete after integration
2. ERP is moved to another server, so more storage and memory for further expansion in the future, meaning there is no budget needed for adding memory and storage server, or changing a server.
3. Rack DB is only needed for backing up DB data.

As shown in the figure above, adjust the system resource-heavy server to a server with good hardware performance, and adjust the configured resources.

By placing the less important server on the server with the next best performance, the system resources freed up can be used by the system to be imported in the future, which achieves future planning.

Certainly! The backup is also the whole machine backup! What IT needs to take into account is not only the immediate resource allocation and benefits, but also a long-term perspective to plan the environmental situation in the next few years and ten years in advance.

2022 Q1 Supplier Quality Review

By Ken Ho

The quality of the raw materials has a great influence on the back-end assembly production. Due to the pandemic, the distance between people has been widened. In this era, it has become relatively difficult to respond to the quality of suppliers and understand the problem. However, the quality management of raw materials cannot be slackened, so IQC uses the newly introduced QMS system and digitization of quality data in order to discuss issues with suppliers, using big data to analyze the problems of each supplier, list common problems and make quality data reports.



Even in the severe situation of the pandemic, it is still possible to use video conference to discuss with suppliers and confirm the improvement measures of suppliers.

Now that the pandemic is gradually easing, IQC has also begun to actively visit suppliers with the R&D and Procurement. By actually understanding the supplier's production line and production report, and corresponding to the past production problems, we can better understand the root cause of the problem and confirm the follow-up improvement measures. In this meeting, the R&D directly meets the supplier face to face, listens to the supplier's response, and then considers whether there is an opportunity to start from the design side to help the supplier improve the yield rate and improve the overall quality. In addition, IQC is no longer just sitting on the seat to inspect incoming materials day after day, but also uses the opportunity of visiting to educate and train quality inspectors. Let the quality inspectors no longer just compare the approval documents and materials, but can get close to the supplier's production line and understand where quality problems may occur.

Through supplier visits one by one, we believe that quality is no longer confined to the small inspection space of IQC. We hope to have the same quality goals as our suppliers and implement them in every production link.

Fat loss activities

By Andy Shi

1. Activity planning

- Announcement and promotion period:
2021/06/15~2021/07/31
- Competition time:
Preliminary round 2021/08/01~2021/11/30
Final round 2021/12/01~2022/04/30
- Participants: all colleagues.
- Staff: members of the welfare committee of each unit
- Purchase the Bluetooth body fat machine HBF-702T.



2. Start the activity

Launch activity: Measure and record the body fat of colleagues in the first week of August 2021



The CEO, the vice president and the heads of all units actively participated in the event.

3. Review of preliminary results

- At the end of November 2021, a one-week preliminary test was conducted.
- Those whose measurement data is less than or equal to the first measurement of body fat would be rewarded and qualified for the finals.
- According to the statistical results, 51 people reached the standard, and each person was rewarded with NT\$1,550.



Each district (the warehouse area on the 4th floor, the first production section, the second production section, the research and development department, and the office area) will evaluate all records after a week of testing.

4. Participation of finals and new colleagues

In the final, 49 colleagues participated, and 8 new colleagues competed for the "Progress Award" together.



5. Final Results

- The results of the 1st final are based on the ratio of fat loss effect and the rate of body fat reduction. After 9 months of fat loss measures and long-term maintenance of health and posture, a total of 39 colleagues reached the standard. After the evaluation, the top 15 and 1 progress award were selected.
- CEO awards



The top five of the event awarded awards and rich rewards.



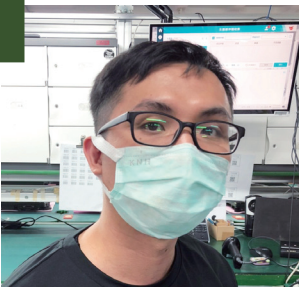
Group photo of finalist winners and CEO.

6. Conclusion

- a. Thanks the CEO for supporting this fat-reducing activity. The company and the Welfare Committee allocated incentives to make the activity more attractive, dynamic and challenging.
- b. Colleagues who achieved the best results achieved a fat reduction of 28%, and 39 people in the company achieved significant fat reduction results. I hope that the next health check will have the same good health results.

Award acceptance speech

1 Chen Huangrong



Hello, supervisors and colleagues!

It was a pleasant surprise and a lot of luck to get the first place in the fat loss activity competition. Although losing fat is not for winning awards, winning awards is the greatest encouragement to yourself.

During the new crown pandemic in recent years, I became fat. The first time I measured the data, I found that I was overweight and had a high visceral fat index. In order to be healthy and my determination to lose weight and lose fat, I first improved my diet, reduced the calorie portion of each meal, and implemented a 168 fasting, and combined with heavy training and aerobics to calculate the calorie deficit.

During fat loss, tell yourself that "fat loss is not difficult, but it is difficult to maintain." I would like to thank the company for this activity and competition for allowing all supervisors and colleagues to pay attention to their health in addition to work.

Thank you all.

2 Rita Hsu



During the severe pandemic period, in order to take into account the health of employees, the company held a fat-reducing activity competition in July 2021, thinking that I must change my pet-like figure back! Start implementing a healthy body fat management program and stand at the moment of the body fat machine! Deng Leng ~ Deng Leng ~ Deng Leng ~ What is ruined! I have unknowingly reached the peak after giving birth to a child! My shame tells me, let's face the reality~ I gained 9kg! The point is, how to lose weight to be healthy? I thought that I had eaten a three-day weight loss meal before, and the effect was very good,

as long as I avoided it (as long as it means it is difficult! I love it so much! I can only bear it) Please continue to see how long it will take to get back to a healthy weight. I thought that in order to become a fairy...haha! ... is to become healthy, be sure to formulate a strategy:

	Day 1		Day 2		Day 3	
Breakfast	Black Coffee or Tea	1 cup	Black Coffee or Tea	1 cup	Black Coffee or Tea	1 cup
	Toasted Bread	1 slice	Toasted Bread	1 slice	Apple	1
	Peanut Butter	2 spoons	Boiled Egg	1	Low Fat Cheese	1 slice
	Grapefruit	In half	Banana	In half	Salty Cookies	1 piece
Lunch	Black Coffee or Tea	1 cup	Black Coffee or Tea	1 cup	Black Coffee or Tea	1 cup
	Toasted Bread	1 slice	Yogurt	1 cup	Toasted Bread	1 slice
	Canned Boiled Tuna	Half can	Salty Cookies	2 pieces	Boiled Egg	1
Dinner	Black Coffee or Tea	1 cup	Black Coffee or Tea	1 cup	Black Coffee or Tea	1 cup
	Apple	1	Carrot	1/2 cup	Canned Boiled Tuna	1 can
	Meat of any types	85 grams	Vanilla Ice Cream	1/2 cup	Carrot	1 cup
	Green beans	1 cup	Banana	In half	Vanilla Ice Cream	1/2 cup
	Carrot	1 cup	Hot Dog	2	Banana	In half
	Vanilla Ice Cream	1 cup	Green Cauliflower	1 cup	Honeydew	1
					White Cauliflower	1 cup

Picture 1



Picture 2

1. Form a team (group of 8)
2. Order a recipe and quantity (Picture 1)
3. Time of execution: three days a week
4. Recording process
5. Done! (Picture 2)

Start the first week of light meals: 2.7 kg in three days! In the process of losing fat for several months, there is a team's encouragement and strict implementation process, plus the exercise of the flywheel class. During the implementation, I lost 8.5 kilograms, and my body fat also dropped from 29.6% to 24.3%, which is really amazing. Sense, finally I got second place! Thank you for the company's activities for the health of employees and the support and efforts of the entire team!

3

Andy Li



With getting older, weight control has become more important. Thanks to the company for the fat reduction activities and various health lectures held this time, I pay more attention to my own health management. During the activity, from the beginning of diet control and changes in daily routine, to cooperating with moderate exercise, let yourself gradually develop exercise habits, and because of these habits, the body will become healthier and more confident, and it will continue even after the activity is over. keep it up.

Diagnosed with COVID-19



Since the first case of COVID-19 was diagnosed in Taiwan on January 21, 2020, various news stations have started to broadcast the status of the development of the pandemic every day. Faced with this sudden new virus, everyone was worried and scared, and people began to buy masks, alcohol, toilet paper and other anti-epidemic materials, even turned into a chaos of masks for a time. Fortunately, after the government forced the production capacity of mask manufacturers and implemented the real-name system of masks, the problem of mask chaos in Taiwan society was gradually solved.

Then, as the number of infected people continued to rise, Taiwan was finally upgraded to the third level of alert on May 19, 2021, and various pandemic prevention regulations were continuously released, such as indoor gatherings of no more than 5 people, temperature measurement, and alcohol sanitizing when entering various places. , the joint system of personnel, the closure of many leisure places and public gathering places, the implementation of diversion of company offices, and the need to use partitions in restaurants, otherwise they can only take out measures, etc., which have caused a great impact on Taiwan's economy and also caused various inconveniences in people's lives.

However, after everyone's joint efforts to fight the pandemic, Taiwan finally survived the three-level alert period and gradually returned to normal life. However, as the COVID-19 virus continues to mutate, Taiwan has ushered in a peak of infection in the second quarter of this year, and negative news of tens of thousands of confirmed infections is being staged every day.

At this time, I myself could not escape the unfortunate infection of the virus. After being confirmed by PCR and quick screening, I began my isolation at home. My symptoms included coughing, fever, sore throat, muscle and muscle that are common to ordinary people. In addition to the soreness, there were also low blood oxygen and coma, which were between mild and moderate symptoms, but fortunately later, there were no moderate or severe symptoms, but also because of the inability to sleep for several days, resulting in the immune system can't rest well, so the time from positive to negative by quick screening has also been extended to 7-8 days. Fortunately, during this period, I took Qingguan No. 1 on time every day and supplemented various nutritional products, so I was able to slowly recover.

The advent of COVID-19 has greatly affected the way of life of human beings. It is hoped that this wave of pandemics will end as soon as possible, so that humans can return to normal life.



Amanda Tsai

The COVID-19 pandemic has lasted for two years. Since April this year, our children's kindergarten began to frequently notify parents to bring back their children during school hours. Because parents of students in the school continue to report the confirmed information, the school needs to be disinfected to maintain the safety of all staff and students. As an office worker and a mother, as soon as I received the notice, I immediately took time off work to pick up my child from school. The feeling of vigilance from time to time was finally released on Friday at the end of April because the young daughter had a fever and was diagnosed with a fever. We have a close life relationship, and within a few days, together with the living in-laws, we have been diagnosed one after another.

Fortunately, most of our physical discomfort went away within 1-2 days.

For two full weeks, our family of five lived in isolation in a house with no home internet or TV. Every day we woke up and opened our eyes to draw, play clay, Lego, play games, and hide. In order to take care of the family's daily life, I directly asked the company for a leave to concentrate on taking care of myself and my children. After the children were born one after another, apart from a short 2-3 day trip, I could get along day and night. This was the first time I spent half a month together. It was also my first experience of "returning to the family" after entering the workplace. It is a precious memory for a family of five.



Yipin Liao

After two years of careful living, I was finally diagnosed with COVID-19. When I received a call from my family member who was diagnosed at work, I began to recall my contacts and footprints with my family in the past three days. After confirming that I had a very high probability of being diagnosed, I quickly organized my home. Considering the possibility of going to work, bringing the virus to the office to affect colleagues, and I reported to the supervisor, and with the consent of the supervisor, I began a 14-day work from home.

Since the outbreak of the pandemic, the company has been making advance deployments. I only take the laptop provided by the company for work, and connect to the company's computer host through VPN. In addition, the company's internal website is well established, I can successfully complete the tasks that must be completed every day without encountering any difficulties, and achieve "coexistence with the pandemic" without affecting the original work.

After the quarantine period ended, I returned to work in the company, and the integration went smoothly. The long-term new crown situation caused by illness is currently being overcome.



Stella Lin

As the pandemic gradually heats up and spreads, in the face of the pandemic, I am waiting for it with the mentality of being a cold. It was the first time I went to the PCR screening in the face of physical discomfort, and the result was negative. At that time, I was experiencing a cough all night, and at one point I felt that I really just had a common cold, not COVID-19, until two days later when the symptoms of fever and the feeling of soreness became more obvious, I am -confirmed-diagnosed-, it turns out that my body is not as good as I thought, it will be as simple as a cold and easy to control, my symptoms are all kinds of coughs, sleepless nights accompanied by nasal congestion, but the nasal congestion cannot be used to breathe through the mouth as usual, because as long as the air passes through the mouth, the cough is even more difficult to stop, this feeling is really very difficult; fortunately, it felt like a roller coaster to me, except that it was a 7-day peak stimulation period, but anyway it's okay.



Sonnie Liu

With the spread of the pandemic in Taiwan, the company quickly announced the relevant diagnosis and treatment methods to provide employees with a full understanding of how to respond after the diagnosis. During the peak period of the pandemic, maintain the habit of bringing your laptop home every day to ensure that you can maintain normal home work after the diagnosis is confirmed, and prevent it from happening.

"It's really diagnosed, but fortunately, I brought my laptop home." This is the voice of the moment after the diagnosis.

Fortunately, there were not too many symptoms of discomfort in the body, and I chose the option of working from home, maintaining the original pace of life and work, and seamlessly connecting to work after recovery.



Jonas Hung

On the morning of May 22, the weather was fine. At this time, my body emitted a slight heat, and the thermometer showed 38 degrees. I had a fever! I was praying not to be diagnosed. Taiwan is at the peak of the diagnosis. About 70,000 to 90,000 people are diagnosed every day. News media the 24-hour headlines broadcast the pandemic news, and patiently finished the quick screening. There are two lines. It is suspected to be diagnosed! I started to panic, and I don't know how to report the arrangement of isolation with my family. I watched 7+7, 7+ on the Internet. 4, 3+4, 9-square quick screening is a quarantine policy that keeps pace with the times. Immediately notify the company to avoid the spread of infection among colleagues around me. My family members are also quickly screened to see if there is a diagnosis. Fortunately, I am the only one suspected of being diagnosed with symptoms. It became more and more serious and began to have a high fever of 40 degrees. I immediately drove to the local hospital for a complete PCR test, but it was at the peak of the diagnosis, and the testing capacity of medical institutions in various places could be full, and I could only make an online appointment 1-2 days later. During the test, I dragged my body to ask about the relevant test information and time. Looking at the people around me in the same situation, I really felt that the pandemic was serious at the moment.

Taiwan's pandemic prevention process is half a year later than other countries, but our country is still complacent about the low number of confirmed cases, but I don't know how to be beaten back to its original shape in an instant. When other countries encountered an outbreak of rapid screening, insufficient medical resources, and an uncertain quarantine policy, Taiwan experienced it again six months later. The government's handling and planning were only at the moment, and it was unable to communicate with surrounding countries to keep the news of the pandemic circulating.

When the diagnosis is confirmed, the symptoms can only be relieved by taking Puna Pain. When the medical system is fully loaded and there are no medical resources in stock, I deeply feel how helpless parents who have children diagnosed at home will feel.



Vanessa Wang

Before the diagnosis, watching the report of the central command center every day always made people tremble. All kinds of prevention mechanisms came, but they couldn't stop the virus from coming from a bottle of water that I shared with my family. "Disease comes from the mouth".

When my body temperature reached 37.6 and 37.8 degrees, I had a premonition of discomfort. I quickly packed up the necessary work documents, and then changed to work from home. The second line of the quick screening told me that I was "diagnosed". At that moment, my mind was very confused, thinking about preparing food, medicine, and where to live during quarantine. Avoid contact with family members, and follow-up video consultations, and reporting, etc.

After the diagnosis, the unpleasant symptoms appeared one after another, such as sore throat, itching, coughing, sneezing, runny nose... It was like a cold. After drinking chicken soup for two consecutive days, the body was like a sauna. I woke up the next day, except for the throat. Except for the sputum, other discomforts disappeared miraculously, but the quick screening still showed two clearly visible positives, showing that the virus amount was still high.

Unknown always makes people worry and fear. After the diagnosis, I feel relieved and coexist with the virus. Doubt ~ I'm the only one who didn't receive the care package!



Wolf Lin

When the COVID-19 pandemic broke out in 2020, the people of Taiwan worked diligently to cooperate with the government's pandemic prevention policy, so that we could effectively keep the virus out of the country. And the long-term anti-epidemic measures have collapsed, Taiwan has ushered in a pandemic storm in 2022, and I was also diagnosed with the infection in early July!

In fact, this wave of popularity is not surprising at all. To block viruses with a volume of less than 14.13mm³, we must not relax at all times, but it is impossible for humans to have such capabilities if they are not machines.

In view of this, we have introduced a smart material rack this year to replace the personnel with the system to issue materials and effectively trace the source of the materials used for the product. We believe that it can provide users with a more secure experience.



COMPANY INTRODUCTION

MilDef Crete was founded at 1990, we fulfill ISO 9001 and ISO14001. MilDef Crete focus on rugged computer market. We have complete product line including rugged laptop, tablet, mobile device and these products could be use in fields including military, public safety, public utility, on-site service, petroleum and natural gas, telecommunications, transportation, manufacturing, mobile commerce, etc.

MilDef Crete's products sold to the whole world by the brand MilDef. We have transnational team and several sites at Euro, North America and China. We provide our customer quicker and better service by co-work with our distributors and dealers. We keep focus on innovation and product development to provide best products for professional usage. We also have best R&D team for any customized demand. Our products pass various standards including MIL-STD-810 and International Protection Marking (IP54, IP65, IP67) and could fulfill special request such like MIL-STD-461, ANSI or ATEX directive.

EIGHT EDITION 2022 / 8

Issuer | Nelson Chou
Editor-in-Chief | Nelson Chou
Chief Editor | Amanda Tsai
Art Editor | Amanda Tsai, Jackie Huang
Planning | Nelson Chou, Amanda Tsai
Translation | Nelson Chou, Kidd Cheng,
Patricia Huang

Issuer | MilDef Crete.Inc
Add | 7F, No. 250, Sec 3, Peishen Rd,
Shenkeng Dist, New Taipei City
TEL | +886-2-2662-6074
FAX | +886-2-2664-2662
URL | <https://mildef.com>

Copyright declaration
All contents here is covered with copyright, any
usage without permission is forbidden.