

MILDEF CRETE

Corporate Newsletter



Introduction

By PM Manager Ken Ho

As we enter a critical phase of the new project cycle, many tasks are now underway. I would like to thank everyone for continuing to demonstrate adaptability and professionalism, even under tight schedules and evolving requirements.

Given the highly customized nature of our products at Mildef Crete, every change in requirements calls for swift coordination across departments and thoughtful consideration of hardware-software integration.

As a member of the product development team, I've truly come to appreciate that turning needs into real solutions within a short time frame is never the result of one team alone — it stems from the silent synergy and trust we share across the company.

Let's keep up this momentum and collaborative spirit as we continue building Mildef Crete products that are not only competitive, but also worthy of our customers' trust.

Introduction

DP10A Rugged Tablet

2025 Global Partners Meeting @ Sweden

Avalon Airshow 2025

Expanding Capacity, Shaping the Future — CNC Subsidiary FlexBasis Launches Second Plant, Ushering in a New Era of Diversified Manufacturing

Flex-Battery Pack Div.

Improving Quality Awareness

Supplier Cooperation Satisfaction Survey

Employee Activities

- Company Employee Trip

DP10A Rugged Tablet: Built for Precision, Powered for the Extreme

By Annabelle Wu

The DP10A empowers users with reliable performance and adaptable configurations to maximise productivity and operational efficiency across diverse industrial settings.

This rugged 8-inch tablet, purpose-built to withstand the extreme demands of industrial environments such as mining, utilities, logistics, and field service. Powered by a MediaTek i350 quad-core processor, with 4GB LPDDR4 RAM and 128GB eMMC storage, it delivers fast, stable performance for field diagnostics, data collection, and real-time operations. Its Full HD multi touchscreen incorporates optical bonding and achieves 1000 nits brightness, ensuring excellent readability even under direct sunlight, while supporting glove and rain mode input—ideal for unpredictable working conditions.



The tablet complies with MIL-STD-810H, and is rigorously tested to endure extreme temperatures and various conditions commonly encountered in industrial operations, or remote outdoor locations. The DP10A's chassis is precisely manufactured using CNC-milled aluminum and high-strength engineering plastic. This guarantees exceptional structural integrity and dimensional accuracy, enhancing the tablet's ruggedness and resilience against mechanical stresses. Whether subjected to sudden drops, high heat during engine diagnostics, or freezing temperatures during infrastructure inspections, the DP10A maintains operational reliability. In addition, this tablet features an IP65 rating, providing complete dust-tight protection and safeguarding against water jets. Users can operate confidently in adverse weather, or in particulate-heavy atmospheres.



The tablet's innovative hot-swappable battery system allows power replacement without shutting down, effectively eliminating downtime during extended shifts or critical tasks. Complemented by WLAN, Bluetooth® 5.2, GNSS, the DP10A delivers high-speed, reliable wireless connectivity critical for data-intensive applications in the field.

The DP10A boasts versatile I/O integration—including USB-C, USB-A, Micro HDMI, and Micro SD ensuring flexible peripheral connectivity and rapid data transfer, supporting a wide range of industrial accessories and external displays. Expansion via the docking connector also allows integration with vehicle docking stations or specialised modules, further enhancing operational versatility.

In summary, the DP10A is a highly durable and feature-rich rugged tablet designed to meet the demanding needs of industrial and field service professionals. Its combination of both ruggedness and advanced processing power makes it an ideal solution for mission-critical applications in extreme environments.

2025 Global Partners Meeting @ Sweden

By Manager Sonnie Liu

In May 2025, the distributor conference was originally planned in Europe but was instead held in Sweden. This change highlights our dedication to a partnership that has lasted over 25 years—focusing on long-term collaboration rather than just supply and demand.

The main focus of the conference was improving current product quality and discussing the direction of future product development to boost overall competitiveness.

Conference Summary:

1. Business and Market

- Changes in market share and growth trends
- Sharing successful cases and lessons learned

2. Product

- Enhancing product quality
- Future product development roadmap
- Technical support and training plans

3. Future Outlook

- Key projects and market expansion
- Challenges and possible solutions
- Leadership's vision and commitment

4. Q&A Session

- Real-world market feedback
- Suggestions for improving cooperation

Conclusion:

This year's distributor conference in Kaohsiung reinforced our commitment to long-term collaboration. Discussions covered market updates, product improvement, and future development plans, helping us align our goals and strengthen competitiveness.

The open exchange of ideas and feedback also brought new insights into how we can improve together. Moving forward, we remain dedicated to growing with our partners and creating long-term success.



Avalon Airshow 2025

By Marlan Hapuarachchi

In March, MilDef Crete exhibited at the Avalon International Airshow 2025 in Victoria, Australia. The team were part of the highly successful Investment NSW stand. Out of hundreds of applicants, only eighteen were selected to be part of the Investment NSW stand which made the stand extremely appealing and sought after.

In November 2024, the Business NSW Department invited MilDef Crete to attend the Czech Republic Defence Forum hosted in Sydney, Australia and presented an opportunity to meet the president of the Czech Republic, Mr Petr Pavel.



Following this forum, a workshop was held in February 2025 for industry networking and gave an overview of the NSW government program. This gave MilDef Crete the opportunity to meet their fellow co-exhibitors and understand the process for the following month's exhibition.

At the exhibition, the MilDef Crete team were presented with the honour of meeting Her Excellency the Honourable Margaret Beazley, Governor of New South Wales. Her Excellency's visit provided the unique opportunity to showcase the capabilities and innovation of the company and she dedicated valuable time to engage each of the co-exhibitors and discuss potential avenues for growth within NSW which included conversations about how these companies could further contribute to the state of NSW's economic expansion, job creation and technological advancements. Her Excellency's visit was capped off with a luncheon with representatives of each Investment NSW co-exhibitor with a view of the airshow taking place outside.

We thank Her Excellency for spending time to gain an understanding of the capabilities of MilDef Crete and we are hopeful that there is much good to come out of this newly established relationship with Investment NSW and thank them for their time and effort in investing in the MilDef Crete team.

Expanding Capacity, Shaping the Future — CNC Subsidiary FlexBasis Launches Second Plant, Ushering in a New Era of Diversified Manufacturing

By Dora Lan

In response to growing market demand and the expansion of its manufacturing operations, FlexBasis, the CNC manufacturing subsidiary of MilDef Crete, officially launched its second plant in 2025. This expansion not only boosts overall production capacity and process flexibility but also represents a forward-looking move to support the company's growing business footprint.



To navigate the rapidly evolving industrial landscape, FlexBasis has proactively driven transformation and upgrading efforts, with a strong focus on enhancing both process capability and technological breadth. As its manufacturing operations continue to grow, FlexBasis has expanded its facilities and introduced several high-precision and intelligent systems to build a more future-ready production framework.

In 2025, FlexBasis invested in multiple advanced machines to upgrade its machining and quality control capabilities, including:

- 5-Axis Machining Centers — Enabling efficient processing of complex geometries.
- Automated Storage Systems — Streamlining material handling and storage with automation, improving logistics and production line changeover efficiency.
- 3D Coordinate Measuring Machines (CMMs) — Enhancing quality inspection to ensure dimensional accuracy and process stability.

The establishment of the second plant marks a significant step toward enhanced diversified processing capabilities and smart manufacturing upgrades. By incorporating cutting-edge equipment and intelligent systems, FlexBasis is laying a solid foundation to serve more precision-driven industries.

FlexBasis will continue to adhere to its core strategy of steady expansion and precise manufacturing, deepening synergies across internal and external resources. Driven by a commitment to technology and quality, FlexBasis aims to lead innovation and elevate the value chain within the manufacturing sector.



Flex-Battery Pack Div.

By Jeff Liu

I'm delighted to join the FlexBasis family. Looking ahead to 2025, I would like to share a few key internal improvement initiatives and our company strategies.

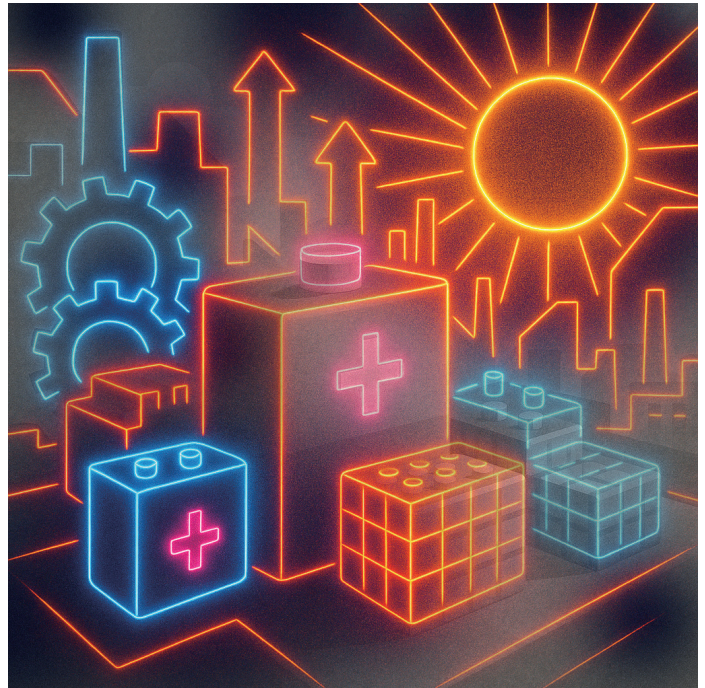
Internally, we will focus on four priorities:

- 1.Strengthening communication and collaboration efficiency between departments, with clearly defined roles and responsibilities.
- 2.Enhancing overall quality management to ensure stable quality from suppliers and product lines, while reducing rework rates.
- 3.Boosting R&D capabilities, prioritizing high-efficiency projects, and ensuring the procurement of compliant equipment that meets production needs.
- 4.Reinforcing supplier and ERP system audits to ensure proper implementation of processes.

Externally, we will adopt tailored strategies based on different customer types:

- 1.Parent Company MilDef Crete: Strengthen rapid response capabilities while consistently maintaining the highest quality standards.
- 2.ODM Customers: Implement strict project progress tracking, deepen relationships at all levels, enhance trust and new project opportunities, and begin introducing IATF 16949 standards.
- 3.OEM Customers: Improve production line capacity and quality efficiency to ensure stable supply and enhance competitiveness.

Our goal is to achieve short-term break-even as quickly as possible, while steadily moving toward our six-year long-term vision, driving continuous growth and improvement.



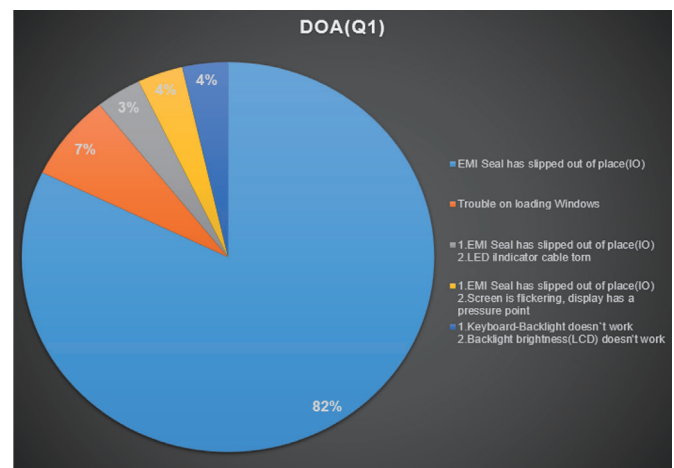
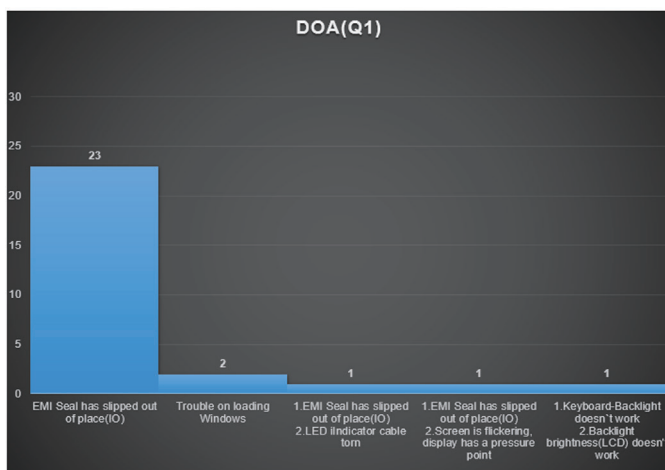
Improving Quality Awareness

By Quality Assurance Department Alex Hsu

As product performance and customer expectations continue to rise, the company has been actively promoting quality improvement initiatives. By integrating big data analysis with the seven quality control tools, we are strengthening the collaboration between production and quality teams to drive quality enhancements.

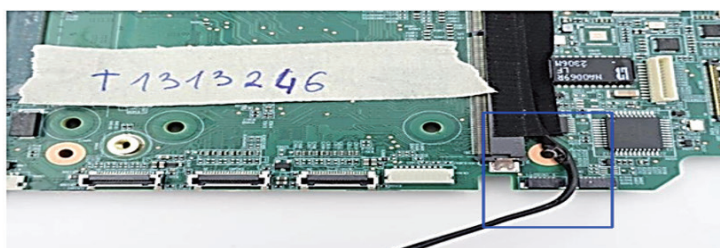
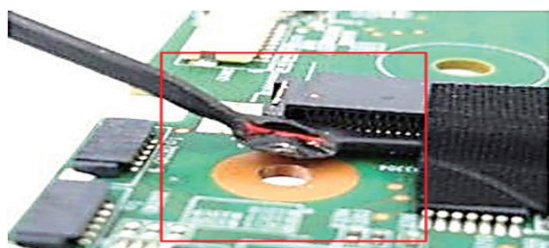


Through the analysis of in-house production data and customer feedback, we have implemented improvements on both the manufacturing and inspection fronts. These improvements are gradually being standardized into our operating procedures to ensure consistent quality.



For recurring or high-frequency issues, the QA team has compiled relevant information and continues to update it regularly to prevent similar problems from happening again.

Cable routing too close to screw holes caused cracking. Please design the routing to avoid areas where screws need to be installed.



Our approach to quality management has gone through several stages of evolution. Regular quality meetings are held by the QA team to promote Total Quality Management (TQM) principles, which are being internalized as part of our company's culture. This effort not only improves production efficiency but also enhances customer satisfaction.



Quality Performance

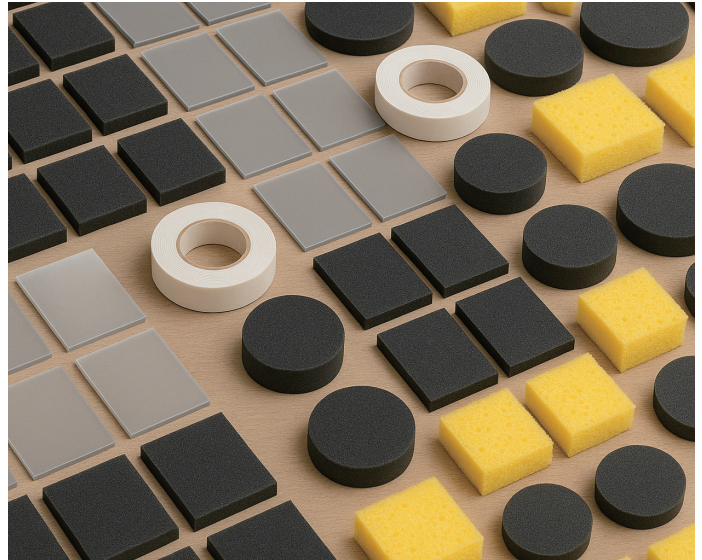
In Q1 of this year, Mildef Crete Inc. conducted a factory audit and awarded our company a score of 95, recognizing our efforts in quality management. The QA department will continue to strengthen internal systems to address areas for improvement and further enhance our overall quality performance.

Summary	Yes	Partly	No	N/A	% Yes	% Partly	% No	% N/A
1. Management Systems	11	1	1	0	85%	8%	8%	0%
2. Performance indicators	7	1	0	0	88%	13%	0%	0%
3. Quality	8	0	0	0	100%	0%	0%	0%
4. Environment	12	0	0	1	100%	0%	0%	8%
5. Business Ethics	7	0	0	0	100%	0%	0%	0%
6. Process	12	0	0	0	100%	0%	0%	0%
Totals:	57	2	1	1	95%	3%	2%	2%

Supplier Cooperation Satisfaction Survey

By Purchasing Department

1. Company Name:
JUSTING PRECISION CO., LTD.
2. Your Position in the Company:
Sales Manager
3. Year of Cooperation with MilDef Crete / Total Years of Cooperation:
Since 2004, it has been 20 years.



4. What products do you supply to MilDef Crete?
Foam products, adhesive tapes, plastic films, nameplates, waterproof materials, and high-performance materials.
5. Did MilDef Crete's team make you feel their sincerity and enthusiasm in the cooperation? Please provide examples.

The R&D team at MilDef Crete has consistently maintained an open and proactive attitude toward new project development, and is always willing to engage in detailed discussions with JUSTING. During the development process, whenever challenges arise, both parties collaborate to propose suggestions and improvement strategies, with JUSTING leveraging its technical expertise to carry out engineering optimizations.

For example:

Case 1: In a new project led by Vic, the nameplate color needed to resemble the appearance and texture of titanium metal. However, the ink supplier faced difficulties in achieving the required color match. Vic actively assisted in adjusting the development timeline, allowing JUSTING more time to coordinate with the ink supplier. After several rounds of color adjustments and sample submissions, the final result successfully met the customer's expectations.

Case 2: In another case, ink adhesion on carbon fiber boards was unstable during printing. After several rounds of discussions with the R&D team, the development timeline was extended slightly to address the issue. Ultimately, a new type of ink was identified that adhered well to the carbon fiber surface. The trust placed in JUSTING by the R&D team enabled both sides to overcome technical challenges and build a strong, successful partnership.

6. How would you evaluate the communication efficiency and cooperation attitude in your collaboration with MilDef Crete? Please provide specific examples or experiences.

The team at MilDef Crete has consistently demonstrated a high level of collaboration. Whether in the R&D or production phase, they maintain open and effective communication with JUSTING, actively addressing and resolving any issues that arise.

For example, when questions were raised regarding the proper storage of adhesive tapes, the relevant team members promptly invited me on-site to provide clarification and arranged training sessions for your colleagues to ensure consistent operations and stable product quality.

7. What is the most memorable experience you have had while working with MilDef Crete?

This component is used in MilDef Crete's rugged computers and must pass stringent environmental tests. After multiple discussions with the R&D team, JUSTING assisted in identifying the root cause and improving the process. As a result, the issue was resolved, the product was successfully delivered, and it passed all required testing and validation.

Future Outlook

8. What are your expectations and suggestions for future cooperation with MilDef Crete?

We look forward to further collaboration with MilDef Crete Computers in the future, growing and thriving together..

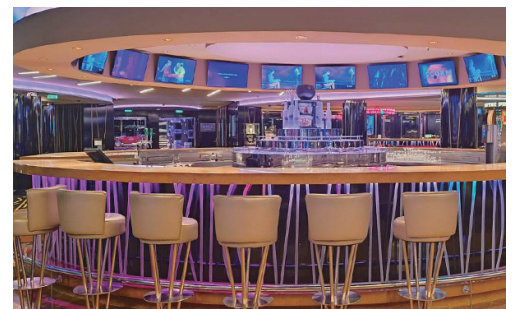
9. In this new era, what innovations and breakthroughs would you like to see from MilDef Crete?

With the advent of the AI era, we look forward to MilDef Crete's computers integrating AI elements into their products to achieve even greater success.

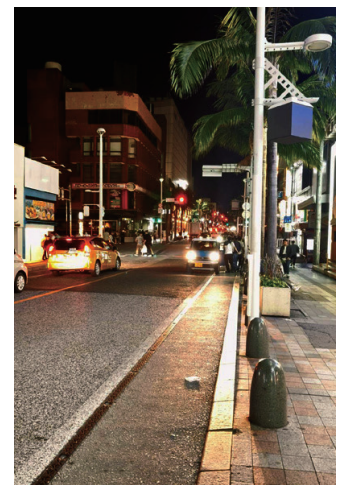
Company Employee Trip

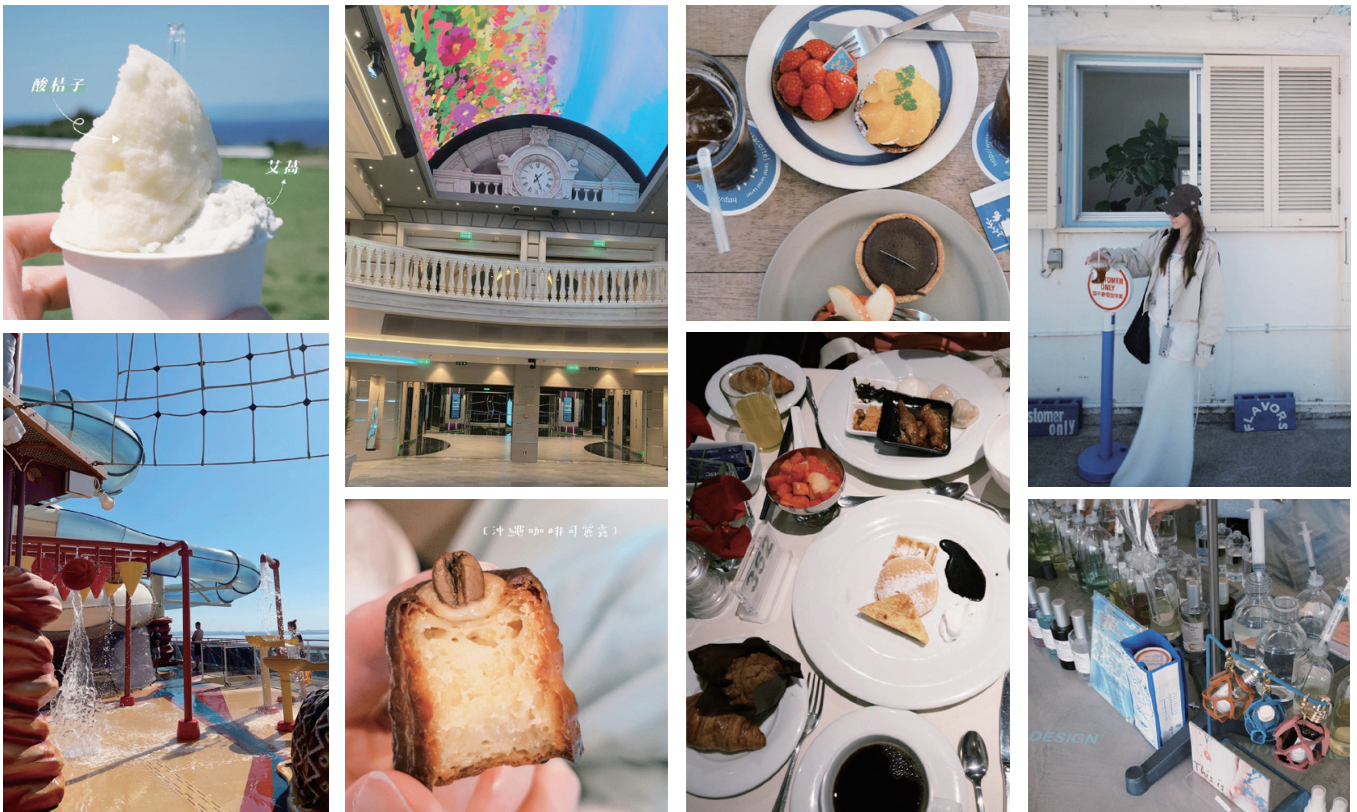
By Welfare Committee

This was our company's very first cruise trip for employees — a 5-day, 4-night journey aboard the MSC Bellissima, setting sail for a delightful adventure at sea.



Our first port of call was Ishigaki Island. Once ashore, the team split into two groups — some stayed on the cruise ship to enjoy its facilities, while others opted for an additional land tour. We visited the local traditional market to experience the island's authentic charm, then headed to the stunning Kabira Bay, where fine white sand and crystal-clear waters left us in awe. A ride on a glass-bottom boat gave us a close-up view of vibrant coral reefs and colorful tropical fish. On our way back, we explored a supermarket, Daiso, and the Edion discount electronics store, and treated ourselves to rich, creamy local ice cream.





On the third day, we arrived at our second destination — Naha City. We'd long heard stories about how fun Naha is, and this time we finally got to experience it ourselves. Our first stop was the Itoman Fish Market, where we were greeted by fresh sashimi, lobsters, sea urchins, baked scallops, and giant oysters — an irresistible seafood feast. Everything wasn't just fresh and delicious; the prices were surprisingly friendly too. After filling our stomachs, we headed to the famous Kokusai Street, lined with souvenir shops, drugstores, and department stores. We couldn't resist bringing home Okinawan specialties like brown sugar, snow salt, shrimp crackers, and Shisa lion-dog figurines. To our surprise, we also discovered that Okinawan hand-drip coffee was exceptionally good!

Every trip inevitably ends while we're still savoring the moments. Here's to more adventures together in the future!





COMPANY INTRODUCTION

MilDef Crete was founded at 1990, we fulfill ISO 9001 and ISO14001. MilDef Crete focus on rugged computer market. We have complete product line including rugged laptop, tablet, mobile device and these products could be use in fields including military, public safety, public utility, on-site service, petroleum and natural gas, telecommunications, transportation, manufacturing, mobile commerce, etc.

MilDef Crete's products sold to the whole world by the brand MilDef. We have transnational team and several sites at Euro, North America and Australia. We provide our customer quicker and better service by co-work with our distributors and dealers. We keep focus on innovation and product development to provide best products for professional usage. We also have best R&D team for any customized demand. Our products pass various standards including MIL-STD-810 and International Protection Marking (IP54, IP65, IP67) and could fulfill special request such like MIL-STD-461, ANSI or ATEX directive.

FOURTEEN EDITION 2025 / 8

Issuer | Nelson Chou
 Editor-in-Chief | Nelson Chou
 Chief Editor | Amanda Tsai
 Art Editor | Amanda Tsai, Jackie Huang
 Planning | Nelson Chou, Amanda Tsai
 Translation | Nelson Chou, Marlan
 Hapuarachchi, Annabelle Wu,
 Issuer | MilDef Crete. Inc.
 Add | 7F, No. 250, Sec 3, Peishen Rd,
 Shenkeng Dist, New Taipei City
 TEL | +886-2-2662-6074
 FAX | +886-2-2664-2662
 URL | www.mildefcrete.com

Copyright declaration

All contents here is covered with copyright, any usage without permission is forbidden.