

MILDEF CRETE

Corporate Newsletter



Introduction

By Accounting Manager Ada Liu

Many people think that financial work is static and lacks challenges. I believe you who are reading this article feel the same way.

With the development of the company's business, we've transitioned from originally holding investment companies to now holding subsidiary companies. Furthermore, the adoption of international accounting standards instead of the domestic universally Accepted Accounting Principles has added complexity and depth to our accounting processes.

Since our company went public, we've also been under the supervision of the Financial Supervisory Commission (referred to as the FSC). The Finance Department has become the interface between the

Introduction

Flex-Battery Pack Div.

Introduction of the Ultimate Rugged Handheld, DF10 in Q2 of 2023

Multi Battery Charger, MCDH

The Japanese Exhibition

The Development of Procurement and Supply Management

Fostering the Connection between MilDef Crete and the Public: Upgrading MilDef Crete Official Website

Material Cart: Driving Digitalized Material Preparation Operations

Employee Activities

– Adjust office space to upgrade the best working environment Part2: R&D

company and the FSC. We must be vigilant and adhere to relevant laws and information disclosures to avoid violations and penalties. Simultaneously, we need to cooperate with the FSC's measures aimed at enhancing corporate governance, improving sustainable development, and bolstering the international competitiveness of the capital market. We report to the board of directors and participate in discussions and decisions regarding these matters.

Fortunately, the company has consistently emphasized core operations, maintained financial health, and the management team is fully aware of the significance of corporate governance. Consequently, this has lowered financial and operational risks.

In conclusion, let's draw inspiration from the book title, "The Last One to be Eliminated is the One Who Understands and Learns." Lastly, I'd like to express gratitude to the Executive Vice President for providing the writing direction.

Flex-Battery Pack Div.

By Roger

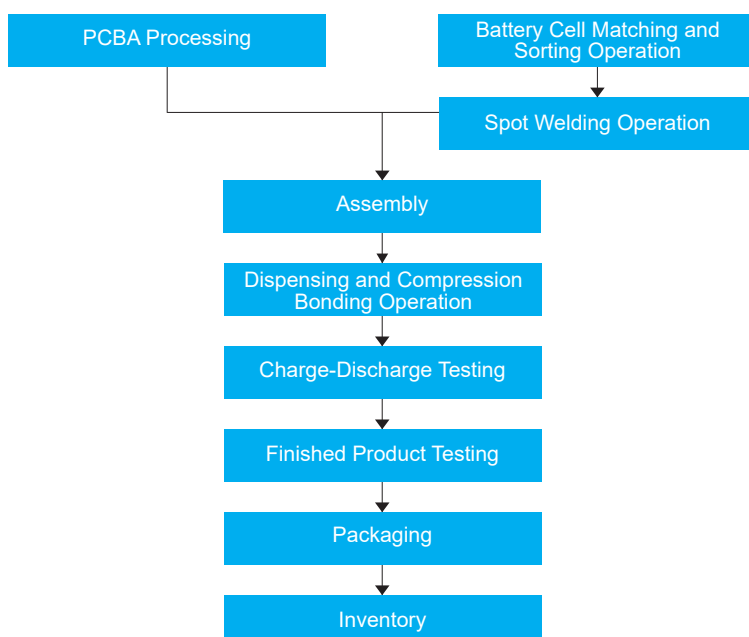
Energy, providing the necessary power and vitality for various industries, businesses, technologies, and daily activities, is therefore regarded as an indispensable foundational element of modern society.

In modern society, technological products and applications have become an indispensable part of people's lives. From 3C products (computers, communications, and consumer electronics) to the analysis of massive data and cloud computing, the utilization of these technologies relies on stable and reliable power support. This has elevated the importance of power suppliers, leading to the establishment of Battery Pack Div., dedicated to providing various types of power solutions.

Based on customers' varying power demands, Battery Pack Div. Unit selects appropriate battery cells and materials. These materials undergo careful screening, grading, and processing before being combined to create power sources that can meet customer requirements.

In conclusion, energy plays an exceedingly vital role in modern society, underpinning the execution of various technological products and applications. The existence of Battery Pack Div. provides customized energy solutions across industries, ensuring the continuous development and operation of modern technology.

Simplified Process and Equipment of the Battery Pack Div.



Sorting Machine



Automatic Spot Welding Machine



Finished and Semi-Finished Product Testing Machine



Charge-Discharge Machine

Introduction of the Ultimate Rugged Handheld, DF10 in Q2 of 2023

By Annabelle Wu

In today's fast-paced world, reliable technology is the key to staying ahead of the competition. And now, we're proudly announcing the release of the tough and rugged handheld, DF10. This portable device is designed to accompany you in your most challenging environments. With dimensions of 184 x 90 x 23 mm and a weight of only 440g, the ruggedness of the DF10 is beyond your expectations. With a CNC-milled case, it is not only designed with an eye-catching case but is also practically indestructible. DF10 complies with MIL-STD-810H and IP67, and is ready to face the harshest conditions, including water exposure and heavy impacts. Furthermore, operating in extreme temperatures is no longer a challenge, and DF10 has a strong ability to work under a wide operating temperature range of -20°C to 60°C.



Platform and Processor Upgrade

As a successor to the handheld DF8A, the DF10 is now upgraded to Operating System of Android 10. Powering by Mediatek i350 Processor, the ARM Cortex-A53 Quad Core processor is capable to deliver fast performance, up to 2.0 GHz, guaranteeing smooth multitasking and thus ensuring high productivity. In addition, DF10 offers a high level of security protection. The ARM® Trust Zone® provides robust built-in security, safeguarding sensitive data and preventing unauthorized access.

Stunning Visual and Smooth Operating Experience

To meet the users' expectation, DF10 is designed with a high resolution of 5.7" resistive touch panel. To ensure a vivid visual experience, some strategy has been applied to the display. Not only with high resolution of 720 x 1280, the display utilizes the Optical Bonding technology and as well as high brightness of 560 ~ 640 nits to boost the readability.

In addition, with the aid of backlight function keys, users can quickly return to the homepage or previous page, as well as the most recently used program, with a single click. Besides, with the magnetic stylus pen attached on the right side, the users are able to navigate the display smoothly while wearing gloves.



Hot-swappable Battery to ensure Durable Performance

The hot-swappable battery allows users to swiftly and conveniently replace a running low battery without having to switch off the device. The feature can significantly improve operating durability, especially in field operations. Users would not have to worry about finding a power source at outdoor, just a battery replacement will do. Also, the battery is designed with Shut Down Mode (SDM) which is to prolong its storage time and prevent from over-discharging. The SDM will sustain for approximately 180 days. To deactivate this protective mode, the user will only need to install the battery in the device and connect it to an AC adapter until the charge indicator lights orange.



Ultimate Versatility Beyond Your Expectation

Integrated with a variety of features, the DF10 is said to be a compact yet flexible device.

- **Sensors:** Equipped with Magnetic, Accelerometer, Gyro, Proximity, and Light sensors, it captures every aspect of the environment, enabling seamless navigation and data collection.
- **Communication:** Stay connected with WLAN, Bluetooth®, and GNSS, ensuring real-time data exchange and accurate location tracking.
- **Front and Rear Camera:** Empowered with the 13MP rear camera and 5MP front camera, it enables high-quality image and video capture for documentation and communication.
- **Connectivity:** In accordance with EU policy of standardizing the charging port, the USB 2.0 OTG Type C is introduced to DF10. It facilitates rapid data transfer and charging, ensuring your device is always ready for action.
- **Optional Fischer Connector:** The optional Fischer connector offers a versatile and reliable connection with various signals, adapting to the particular specifications of your industry.



In short, DF10 is Crete's new Android handheld that you should not ever missed out! From fieldwork to heavy industries, this durable and reliable device should be your first ultimate choice. We believe that the performance of

this compact yet durable device will meet what you are looking for!

The New Generation

DF10 as a successor of the previous model, DF8A. The following are comparisons of the specifications of these models.

| | DF8A | DF10 |
|------------------------------|---|--|
| Platform | NXP i.MX6 Arm Platform | Mediatek i350 Platform |
| OS | <ul style="list-style-type: none"> – Android 4.4.3 – Android 7.1.1 | <ul style="list-style-type: none"> – Android 10 |
| Processor | <ul style="list-style-type: none"> – NXP ARM Cortex-A9 i.MX6 Quad Core 1GHz | <ul style="list-style-type: none"> – Mediatek ARM Cortex-A53 i350 Quad Core 2.0 GHz |
| Display | <ul style="list-style-type: none"> – 5" (480×800) LCD – Optical Bonding – Resistive Single Touch Type – Brightness (min.~typ.): 292~350 nits – Capacitive Multi Touch Screen: By CDP | <ul style="list-style-type: none"> – 5.7" (720×1280) LCD – Optical Bonding – 2 Point Resistive Touch Type – Brightness (min.~ typ.): 560~640 nits – Optional Invisible Mode on/off – Optional Touch Screen Protection Film – Night Vision: By CDP |
| Security | NA | <ul style="list-style-type: none"> – ARM® TrustZone® (Built-in) Security |
| Camera | <ul style="list-style-type: none"> – Optional 5M Pixel | <ul style="list-style-type: none"> – Front Camera 5MP×1 (FF Type, f: 60cm) – Rear Camera 13MP×1 (FF Type, f: 40cm) |
| Case | <ul style="list-style-type: none"> – Front Case: Aluminum Alloy – Rear Case: Plastic – Color: Black | <ul style="list-style-type: none"> – CNC milled Aluminum – Color: Black (Water transfer printing) |
| Environmental Specifications | <ul style="list-style-type: none"> – Operating Temperature: Std: -20°C ~ +60°C Optional: -30°C ~ 60°C (By sorting) – Storage Temperature: -40°C ~ 70°C | <ul style="list-style-type: none"> – Operating Temperature: -20°C ~ +60°C* *Battery mode – Storage Temperature: -40°C ~ 70°C |
| Dimensions (W) × (D) × (H) | 171×94×28 mm | 184×90×23 mm |
| Weight | Approximately 505g *Weight includes WiFi/ BT Module, GPS, battery×1 | Approximately 440g *Weight includes a standard battery |

To learn more about this rugged yet convenience device, please access to our website: www.mildecrete.com.

Multi Battery Charger, MCDH

By Janice Liao



Following the release of the handheld DH8 in last November, MilDef Crete has launched a new accessory for it. The Multi Battery Charger, MCDH, is designed with dual battery slots and is capable of charging two battery packs (BDH82A) simultaneously. MCDH is said to double up the charging efficiency as two batteries could be fully charged at the same time. Besides, there are two LED indicators to show the charging progress of each battery.

The MCDH is now upgraded with a new feature, known as the "Mode Switch". This allows the user to simply switch between the typical "Charge Mode" and the newly introduced "Storage Mode". Literally, in "Storage Mode", the user can discharge the battery packs to 50% in accordance to the Battery Storage Recommendation. The main idea of this feature is to maintain the battery's health conditions whenever it is not in use for an extended period of time. The user will no longer have to be concerned about the damage as a result of over-discharging.



Mode Switch

Show green in Charge Mode and flashing green in Storage Mode.



Show orange when completed and flashing orange when in progress.

Safety first! Crete always prioritizes safety when it comes to the usage of electricity. We are aware that charging safety is crucial; thus, several protections are implemented in MCDH.

1. Broad Voltage Application of 12-32V: to regulate the input voltage to meet the system's requirements.
2. Overvoltage protection of 34V: to protect the system from abnormally high voltage input.
3. Reverse Voltage Protection: to prevent damage to power supplies and electronic circuits in the event of a reverse voltage at the input or output terminals
4. Battery Installation Detection: to ensure the system only operates when the battery is installed.
5. Short Circuit Protection: to protect the system from damage caused by a sudden and excessive flow of current.
6. The use of an independent charging IC for each channel
7. The use of a high-efficiency battery charger controller (LTC4012-2)

Last but not least, if dual battery slots are insufficient for your usage requirements, we can make it happen by connecting two MCDH parallelly (available for up to 4 batteries). For more information, please consult our sales team for such customization.

The Japanese Exhibition

By Sonnie Liu

DSEI, the world's largest defense and security technology exhibition, took place from March 15th to 17th in Tokyo, Japan, under the name DSEI JAPAN. This marked the first time DSEI was held outside of the UK and also served as the inaugural DSEI event following the outbreak of the COVID-19 pandemic.

The event showcased a wide range of products and technologies related to naval, land, air forces, and government public sectors. This encompassed rugged computers, surveillance systems, IT management systems, medical (rescue and disaster relief) equipment, networking devices, electronic instruments, cybersecurity software, specialized cables, weaponry, explosive-resistant gear, military and police uniforms, and all other products related to the defense industry.

The primary purpose of attending this event was to explore directions for the development of next-generation products. The exhibition content highlighted the ongoing trends in individual soldier applications and unmanned drone operations. Leveraging these insights, the company plans to continuously enhance the development of new products, fostering innovation and progress.



The Development of Procurement and Supply Management

By Rita Hsu

I. overview

In recent years, the manufacturing industry has been impacted by business conditions, global economic environments, and policy issues. These matters encompass international energy and raw material prices, trends in the US economy, carbon neutrality and net-zero carbon emissions within the framework of Environmental, Social, and Governance (ESG) sustainability standards. Under these influences, an increasing number of businesses and countries are contemplating the possibility of shifting from a "long chain" to a "short chain," replacing globalized production with localized and regionalized approaches. The manufacturing sector is projected to undergo supply chain reconfiguration and factory investments to address geopolitical risks, carbon reduction goals, and the trend toward short-chain manufacturing. However, in highly customized industries, procurement plays a pivotal role, allowing companies to maintain a distinctive position in a competitive landscape by strategically acquiring essential components and resources.

II. Strategic Procurement Development under Macroeconomic Considerations

To accomplish the company's long-term goals, strategic procurement should revolve around harnessing internal demands, establishing enduring cooperative conditions with suppliers through strategic processes. Key aspects of strategic procurement encompass benchmarking learning from suppliers in terms of quality and technical services, consistent monitoring of supply markets, setting up a supplier roster structure, and forecasting future customer needs and market trends. Different material categories warrant distinct procurement strategies, amalgamating competitive suppliers into long-term partners. While selecting suppliers, factors like the overall values shared between procurement and suppliers, a deep understanding of material status and market dynamics, enhancing differentiated commercial relationships, cross-functional team operations and support, as well as the supplier's brand influence and level of customer assistance should all be considered.

III. The Significance of Supply Chain Development in Highly Customized Products

The effective operation of the supply chain is crucial for the successful delivery of highly customized products. In this context, procurement must consider the following issues within the supply chain relationship:

1. Forecast Order Process management: Establish efficient forecasting and order management processes to accurately capture and transmit customer demands to the supply chain, including communicating order details, delivery times, and specific requirements.
2. Supplier Collaboration: Collaborate closely with suppliers to collectively discuss product specifications and technical requirements, aiding suppliers in better understanding customized needs and providing corresponding solutions.
3. Flexible Production Capacity: Ensure the supply chain possesses sufficient flexible production capacity to address fluctuations in demand for highly customized products, including adaptable production line configurations and the ability to swiftly change and adjust production plans.

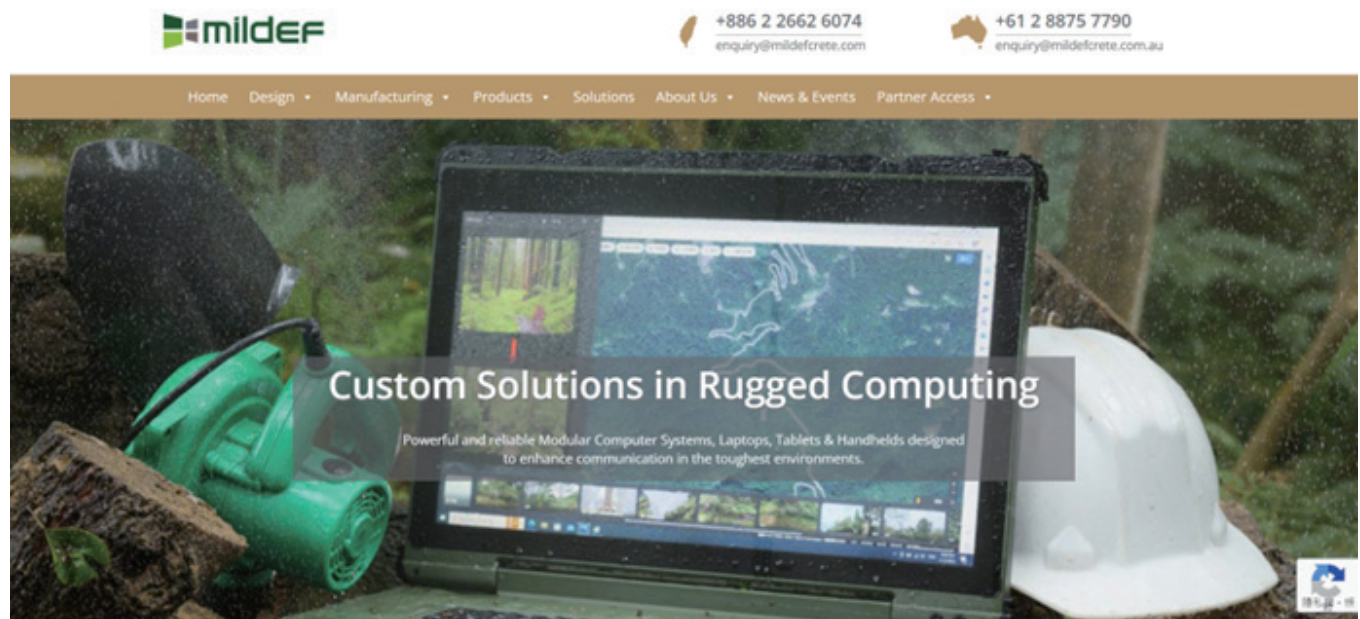
4. Quality Control: Establish stringent quality standards and processes, working with suppliers to conduct necessary testing and inspections to ensure products delivered to customers meet requirements.
5. Integrated Information Flow: Guarantee smooth information flow within the supply chain to facilitate communication and coordination. This can be achieved through shared data platforms, supply chain management systems, and real-time communication tools.

IV. Conclusion

Procurement and supply chain management within the manufacturing industry face challenges from macroeconomic issues and policy concerns, prompting businesses to contemplate supply chain reorganization and localization strategies. In highly customized industries, strategic procurement is pivotal for maintaining competitive advantages. Procurement professionals must establish effective supplier relationships while considering multifaceted factors. For the supply chain, highly customized products demand greater collaboration, flexibility, and quality control to ensure customer demands are met, ultimately achieving sustained competitive advantage.

Fostering the Connection between MilDef Crete and the Public: Upgrading MilDef Crete Official Website

By Annabelle Wu



A well-managed website serves as the best platform for communication between a company and the public. By leveraging the power of visual appeal and persuasive language, we can create an immersive and user-friendly experience that not only attracts potential customers but also fosters loyalty among existing ones.

Since 2022, Crete has established the new domains for the official website (www.mildefcrete.com and www.mildefcrete.com.au). From the interface design to the contents, we've put in so much effort to review the entire website structure. Among the modifications, there are some highlights you should never miss out!

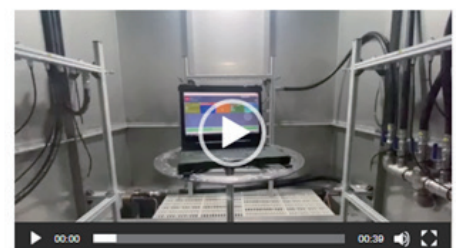
(a) Manufacturing:

In "In-house Test Equipment", we've added some videos, e.g., Waterproof Test and Automated Robot Dispenser, to demonstrate how production lines actually work. The videos not only show our manufacturing capability, but also give the viewer a better understanding of how their products are designed and verified.

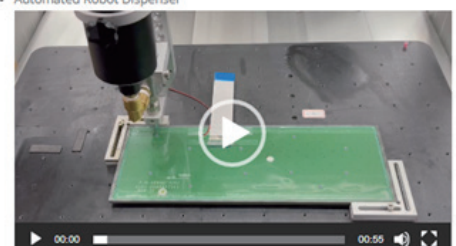
(b) Products

The expression "a picture is worth a thousand words" has never been more accurate. Transparently displaying the product through authentic images will help us build confidence and credibility with our customers because they will know exactly what to expect when their order arrives. Therefore, Crete has collaborated with a professional photography workshop to bring our ideas to life through photography.

• Waterproof



• Automated Robot Dispenser



Incorporating high-quality product photos is a fundamental aspect of an effective website interface upgrade. The high-resolution photos allow our customers to examine the product from various angles, simulating an in-store experience that enhances their confidence in the purchase. Since our rugged products are tangible products with unique features and designs, the photos can be a very useful reference for customers before making a purchase.

Besides, the customers may refer to the Product Specifications for more information about the products. Through compelling descriptions, the customers could understand the product's key features, specifications, and benefits. The combination of stunning visuals and informative descriptions could increase customers' confidence in our products.

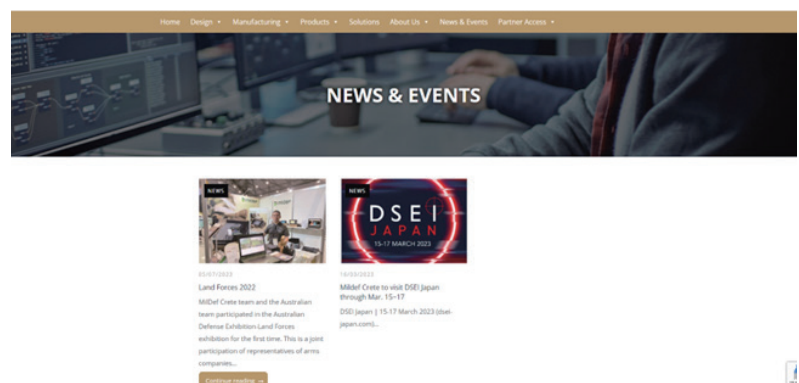


(c) News & Events

The News and Events sections offer fresh and up-to-date information, encouraging users to visit the website frequently to stay informed. Crete will regularly keep the viewer posted with the latest news, achievements, and events. Incorporating this dynamic content not only enhances the user experience but also increases the public's recognition of Crete. Such a forefront of news and trends can foster a sense of community around the website's niche, and we believe this could strengthen the bonding between us and our customers.



In short, this is a big project in Crete to enrich the official website. We are now offering the public with a more advanced platform, thanks to the leadership of the Executive VP, Mr. Nelson Chou, and the contributions of all Crete members from various departments. We believe that investing in website interface upgrades becomes more crucial than ever for us to stay competitive and thrive in the digital market.



Material Cart: Driving Digitalized Material Preparation Operations

By Denis Wu

The material preparation cart approach involves equipping carts with computers and barcode printers, allowing warehouse personnel to directly access the ERP system at the material shelves for real-time material information queries. Through this digitized method, warehouse staff can conveniently retrieve material details, reduce paper usage, and enhance operational efficiency.

Another significant advantage of the material preparation cart method is the reduction in manual writing errors. Handwritten material numbers can result in confusion due to illegibility or mistakes, potentially leading to incorrect material provisioning. By adopting a digital approach, warehouse personnel only need to operate on the computer, eliminating the need for manual information recording and thus mitigating issues stemming from human error.

In addition to decreasing paper usage and reducing errors, the material preparation cart system also offers improved product tracing and receipt information. By utilizing barcode printers, warehouse staff can generate QR code labels containing information during material retrieval, which will concurrently include receipt date details. This is crucial for tracking product progress and accuracy during the production process, thereby enhancing inventory management efficiency.

The implementation of the material preparation cart system has not only elevated operational efficiency during material preparation and minimized human errors but also propelled digital transformation. As technology continues to advance, we can anticipate that such operational methodologies will bring us greater convenience and competitive advantages.



Adjust office space to upgrade the best working environment Part2: R&D

By R&D rOGER



As of the year 2023, CReTE's R&D office space has gone through over two decades of evolution, ensuring that the configuration of the workspace aligns with the changing demands of the times. "To do a good job, one must first have the right tools." Each era has its familiar industry work patterns, and the office space, as one of the environments where people enhance work efficiency and productivity, has evolved in response to the times, adopting various forms to meet corporate needs. This evolution has progressed from the early cubicle-style workspaces to open-plan offices and now to the latest Activity Based Working (ABW) environments.

ABW, short for Activity Based Working, focuses on tailoring work patterns according to activity attributes. The daily tasks of employees are categorized based on activities: Focus, Collaboration, Learning, Socialization, and Relaxation. At this juncture, what employees require is not merely a standardized and assigned space, but rather a versatile setting that accommodates these diverse behavioral modes, facilitating work aligned with specific activity attributes.

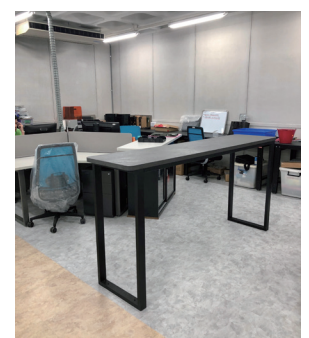


ABW-Office/Flex-Office is an office space based on "activity," offering a more human-centered working environment, and it serves as the central theme for the R&D office space planning.

- The utilization of Y-shaped three-person desk modules enables employees to concentrate individually or collaborate effectively, fostering distinct team connections and encouraging employees to personalize their workspace.
- Bar-style tables between departments foster an appealing and energetic social networking workspace that encourages inter-departmental discussions and learning.
- The combination of minimalistic design, a touch of industrial aesthetics, a palette of beige, gray, and deep black creates a space that exudes a sense of openness and professionalism while providing an environment for relaxation, coffee breaks, and snacks.
- The dual-tone block design of the flooring divides the office areas from walkways, creating a seamless flow of movement.

Throughout a day's work, employees go through multiple transitions between different activity attributes. The new office space configuration provides ample areas to cater to these needs. This enhancement leads to a significant boost in employees' work efficiency and overall satisfaction with the company.

Work originates and thrives in the realm of people-centric environments. As the conduit for people's work, office spaces must be tailored to align with their behavioral patterns to achieve optimal results. Strengthening emotional connections among employees fosters a natural and unconstrained environment for creativity within the R&D office space, yielding a win-win situation for both employees and the company.





COMPANY INTRODUCTION

MilDef Crete was founded at 1990, we fulfill ISO 9001 and ISO14001. MilDef Crete focus on rugged computer market. We have complete product line including rugged laptop, tablet, mobile device and these products could be use in fields including military, public safety, public utility, on-site service, petroleum and natural gas, telecommunications, transportation, manufacturing, mobile commerce, etc.

MilDef Crete's products sold to the whole world by the brand MilDef. We have transnational team and several sites at Euro, North America and China. We provide our customer quicker and better service by co-work with our distributors and dealers. We keep focus on innovation and product development to provide best products for professional usage. We also have best R&D team for any customized demand. Our products pass various standards including MIL-STD-810 and International Protection Marking (IP54, IP65, IP67) and could fulfill special request such like MIL-STD-461, ANSI or ATEX directive.

TENTH EDITION 2023 / 8

Issuer | Nelson Chou
Editor-in-Chief | Nelson Chou
Chief Editor | Amanda Tsai
Art Editor | Amanda Tsai, Jackie Huang
Planning | Nelson Chou, Amanda Tsai
Translation | Nelson Chou, Kidd Cheng,
Annabelle Wu,

Issuer | MilDef Crete. Inc.
Add | 7F, No. 250, Sec 3, Peishen Rd,
Shenkeng Dist, New Taipei City
TEL | +886-2-2662-6074
FAX | +886-2-2664-2662
URL | www.mildefcrete.com

Copyright declaration

All contents here is covered with copyright, any usage without permission is forbidden.